
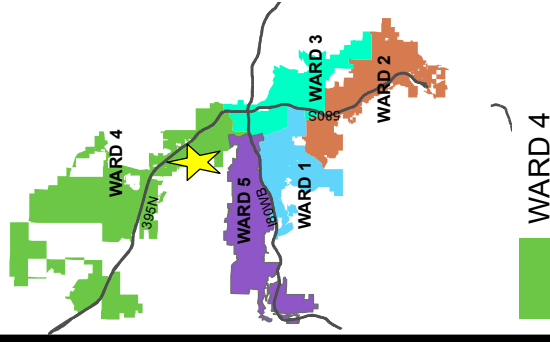


AREA MAP

ANX23-00001

(1045 Hoge Road
Annexation)

Subject Site ► 



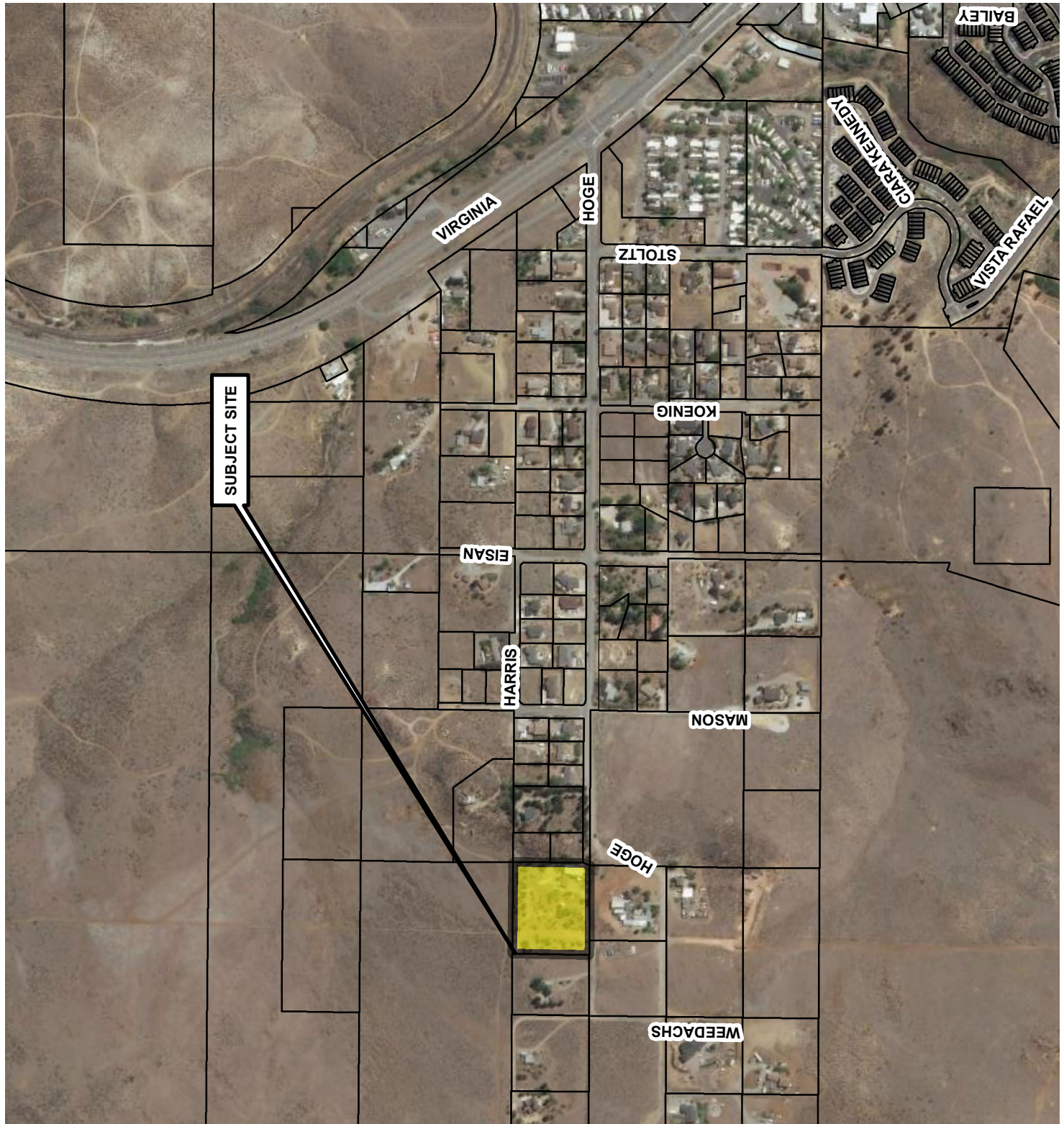
Development
Services
Department



The information hereon
is approximate and
is intended for display
purposes only.

Date: July 2022


Scale: 1 inch = 600 feet

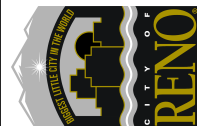
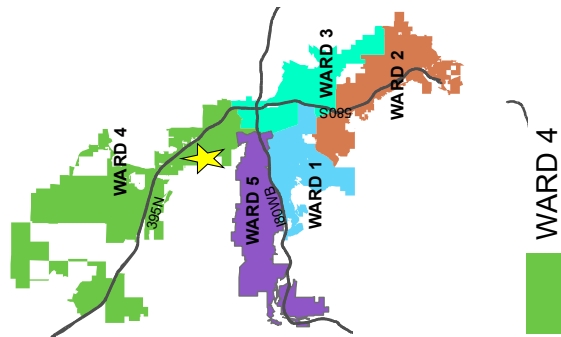


VICINITY MAP

ANX23-00001

(1045 Hoge Road
Annexation)

Subject Site ► 



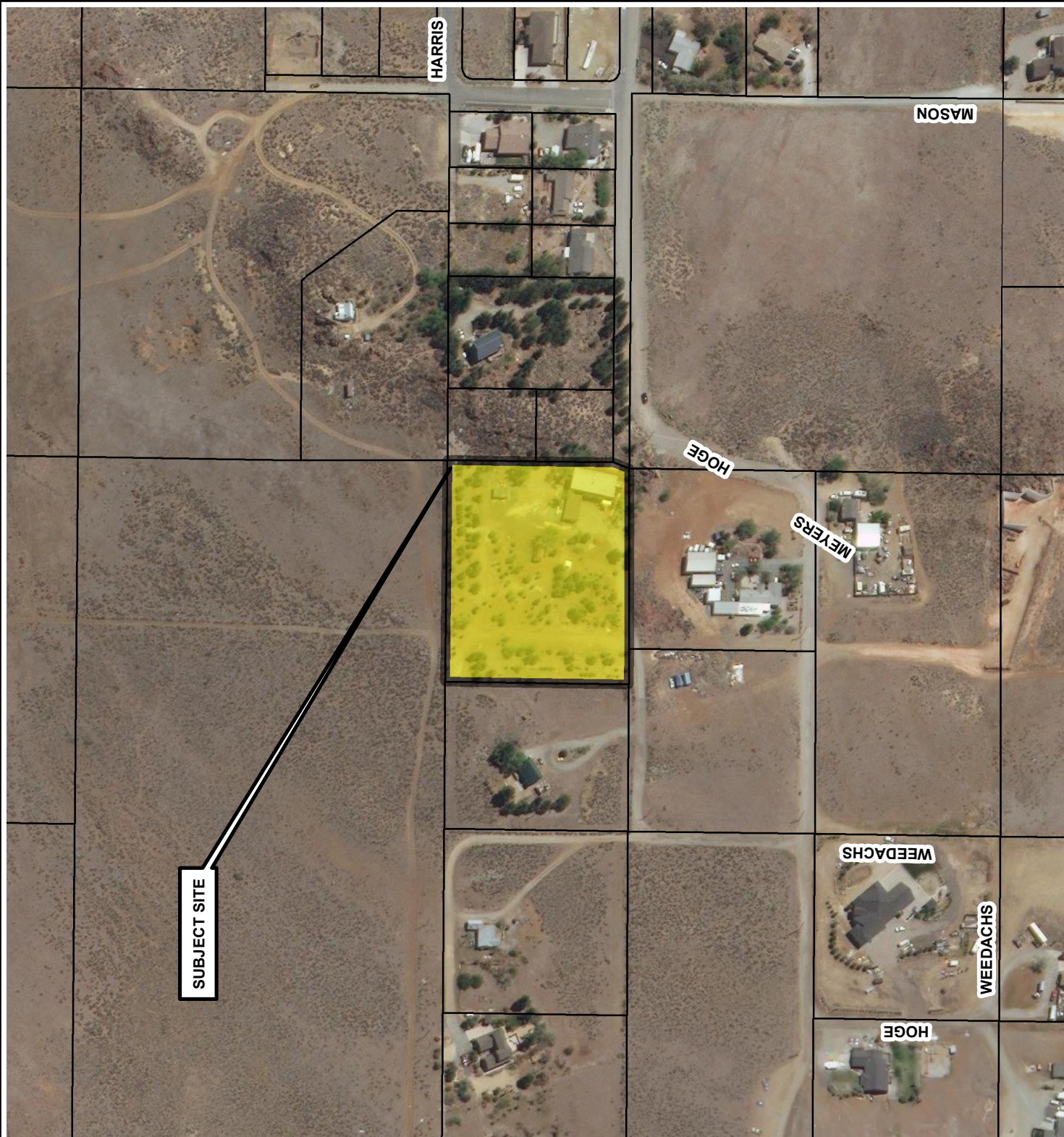
Development
Services
Department



The information herein
is approximate and
is intended for display
purposes only.

Date: July 2022

Scale: 1 inch = 250 feet




ZONING MAP

ANX23-00001

(1045 Hoge Road
Annexation)

ZONING = NZ

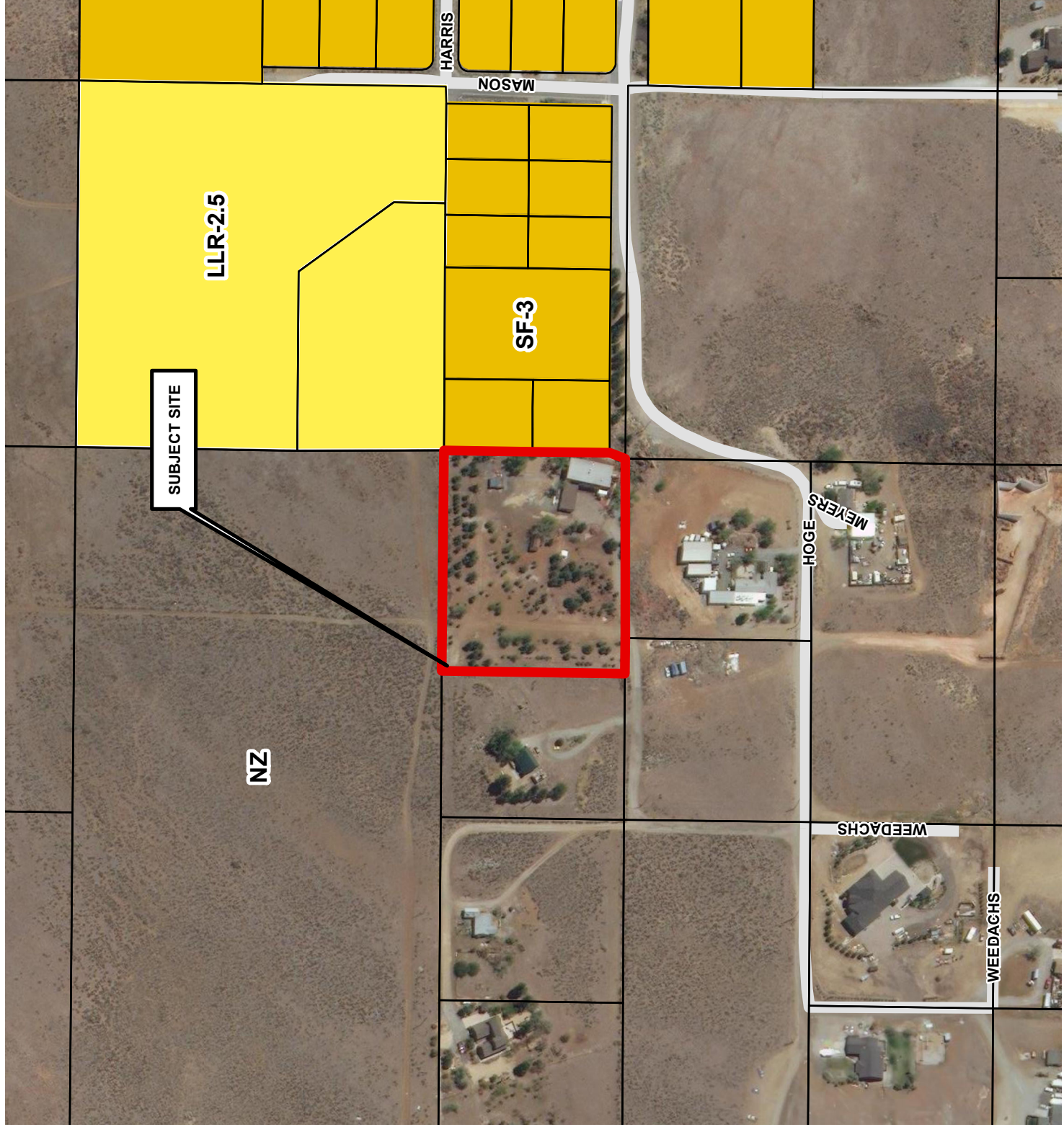
Subject Site ► 

Zoning Designations



The information heron
is approximate and
is intended for display
purposes only.


DATE: July 2022
SCALE: 1 inch = 250 feet

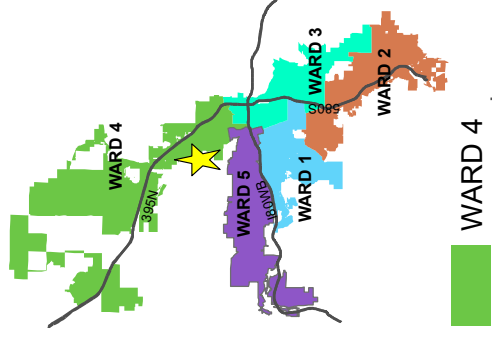


MASTER PLAN MAP

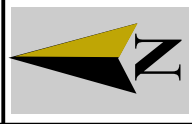
ANX23-00001

(1045 Hoge Road
Annexation)

Subject Site ► 

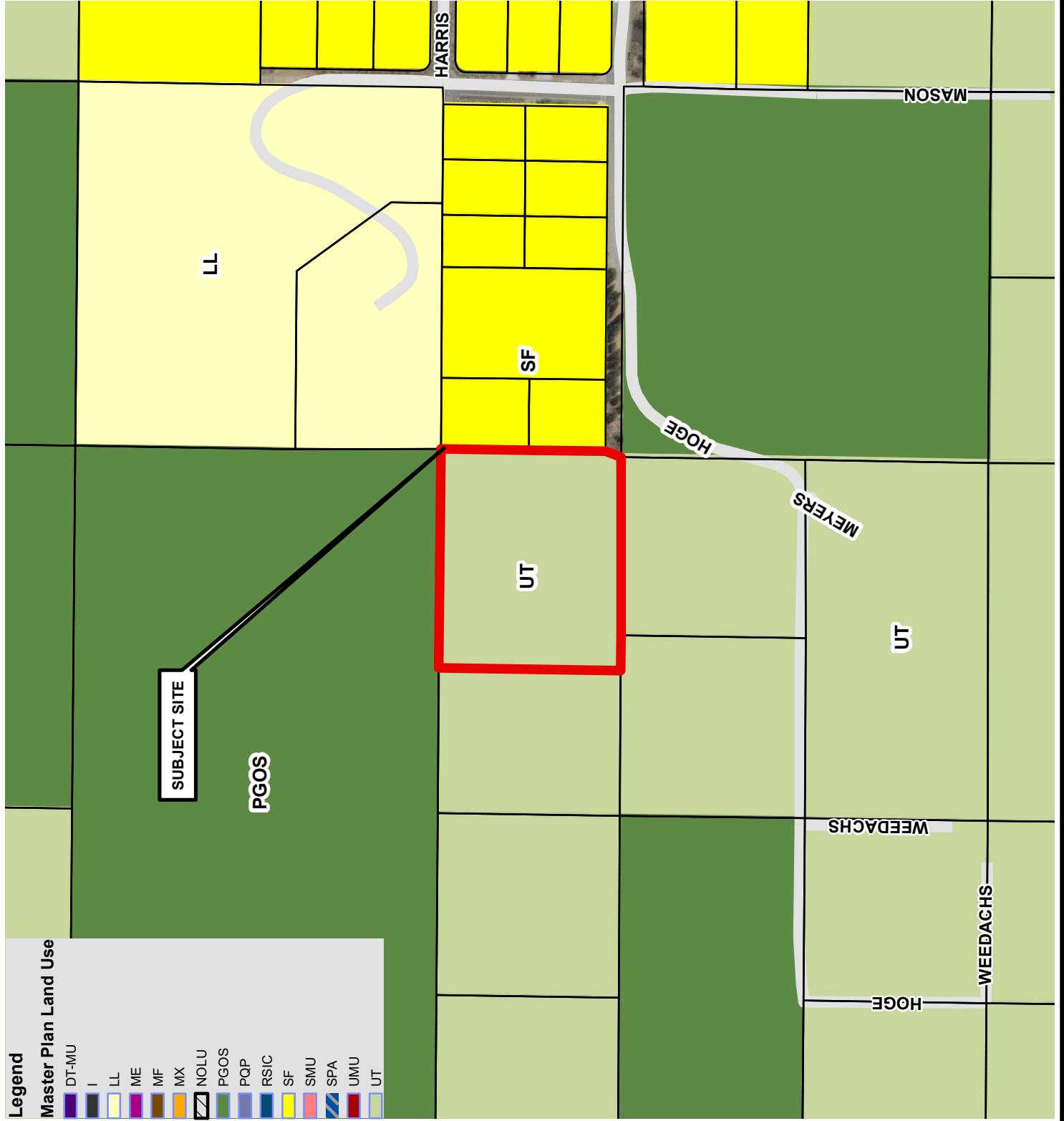


Development
Services
Department



The information hereon
is approximate and
is intended for display
purposes only.

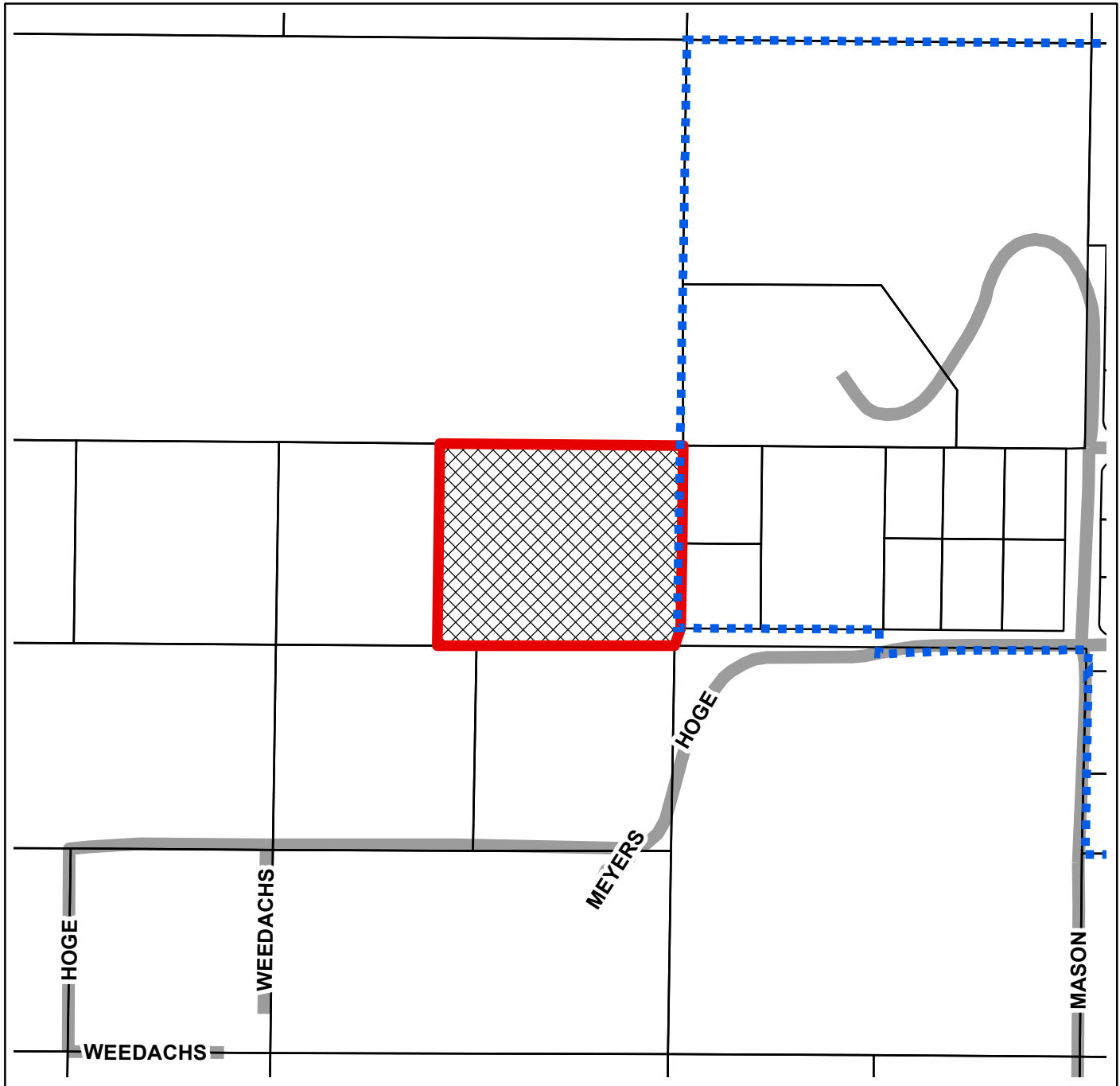
Date: July 2022
Scale: 1 inch = 250 feet



Legend

Master Plan Land Use

- DT-MU
- I
- LL
- ME
- MF
- MX
- NOLU
- PGOS
- PQP
- RSIC
- SF
- SMU
- SPA
- UMU
- UT



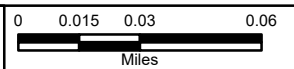
ANX23-00001 (1045 Hoge Road Annexation)



ANNEXATION
of one ±3 acre parcel



CITY LIMITS



The information hereon is approximate and is intended for display purposes only. Reproduction is not permitted. For additional information, please contact the City of Reno Development Services Department



Development Services
Department

1 East 1st Street Phone: 321-8309
P.O. Box 1900 Fax: 334-2043
Reno, NV 89505 www.reno.gov

Map Produced: July 2022